

MARTINIQUE AT ABACOA - PLAT ONE

BEING A REPLAT OF TRACT RN2R ACCORDING TO ABACOA - PLAT NO. 4 REPLAT AS RECORDED IN PLAT BOOK 99, PAGES 14 THROUGH 21, OF THE PUBLIC RECORDS OF PALM BEACH COUNTY, FLORIDA, LYING IN SECTION 14, TOWNSHIP 41 SOUTH, RANGE 42 EAST, TOWN OF JUPITER, PALM BEACH COUNTY, FLORIDA

SHEET 8 OF 10 JULY, 2004

54

EGRET LANDING AT JUPITER, A P.U.D.
PLAT BOOK 71, PAGES 33 - 48

LESLIE STREET
NORTH PALM BEACH HEIGHTS

ROBINSON STREET

THIS INSTRUMENT PREPARED BY
DAVID L. SMITH, P.S.M. LS-4951, STATE OF FLORIDA
LAWSON, NOBLE AND WEBB, INC.
ENGINEERS PLANNERS SURVEYORS
420 COLUMBIA DRIVE, SUITE 110
WEST PALM BEACH, FLORIDA 33409
LB 6674

100' CANAL

WEST LINE OF THE NORTHWEST
ONE-QUARTER SECTION 14-41-42

26' ACCESS & MAINTENANCE EASEMENT
(PER O.R.B. 10060, PG. 999)
12' U.E. (PER O.R.B. 5546, PG. 1471)
6' U.E. (PER O.R.B. 10060, PG. 1018)

MATCH LINE
(See Sheet 9)

MATCH LINE
(See Sheet 9)

MATCH LINE
(See Sheet 9)

TRACT "B"

MATCH LINE
(See Sheet 4)

MATCH LINE
(See Sheet 4)

MATCH LINE
(See Sheet 5)

LIMITS OF PLAT

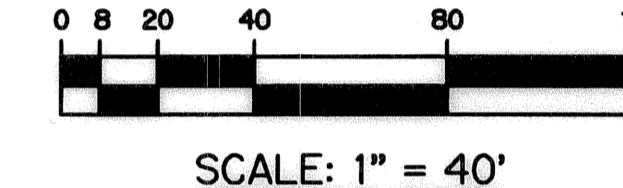
LIMITS OF PLAT

MATCH LINE
(See Sheet 7)

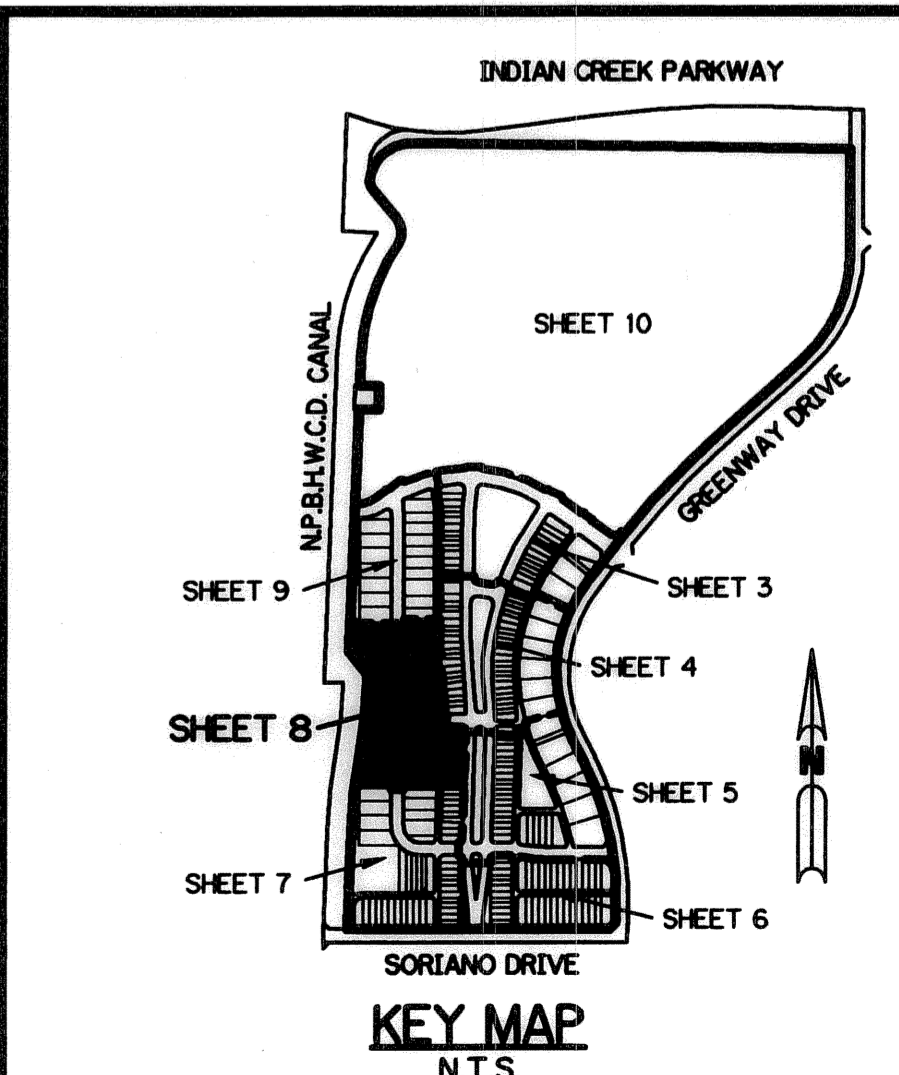
MATCH LINE
(See Sheet 7)

DETAIL "A"

NOT TO SCALE



- LEGEND:**
- - SET PERMANENT CONTROL POINT, LB #6674
 - - SET PARKER KALON NAIL AND P.R.M. DISK LB #6674
 - - SET PERMANENT REFERENCE MONUMENT, LB #6674
 - ▣ - FOUND P.R.M. #26
 - △ - DELTA ANGLE
 - BE - BUFFER EASEMENT
 - CL - CENTERLINE
 - CB - CHORD BEARING
 - CH - CHORD DISTANCE
 - DB - DEED BOOK
 - DE - DRAINAGE EASEMENT
 - IEE - INGRESS AND EGRESS EASEMENT
 - L - ARC LENGTH
 - L.A.E. - LIMITED ACCESS EASEMENT
 - N.T.S. - NOT TO SCALE
 - NPBCID - NORTHERN PALM BEACH COUNTY IMPROVEMENT DISTRICT
 - (NR) - NON-RADIAL
 - O.R.B. - OFFICIAL RECORD BOOK
 - P.R.C. - POINT OF REVERSE CURVATURE
 - P.R.M. - PERMANENT REFERENCE MONUMENT
 - P.A.E. - PEDESTRIAN ACCESS EASEMENT
 - P.B. - PLAT BOOK
 - P.D.E. - PUBLIC DRAINAGE EASEMENT
 - PGS. - PAGES
 - P.I. - POINT OF INTERSECTION
 - (RAD) - RADIAL
 - R - RADIUS
 - (RF) - RADIAL TO FRONT LOT LINE
 - (RR) - RADIAL TO REAR LOT LINE
 - S.E. - SIDEWALK EASEMENT
 - S.S.E. - SAFE SIGHT EASEMENT
 - S.T. - SURVEY TIE
 - U.E. - UTILITY EASEMENT
 - W.M.A.E. - WATER MANAGEMENT ACCESS EASEMENT
 - N 931379.1119
E 785294.7754 - DENOTES STATE PLANE COORDINATES



NOTE:
COORDINATES SHOWN ARE GRID COORDINATES
DATUM = NAD 83 (1990 ADJUSTMENT)
ZONE = FLORIDA EAST ZONE
LINEAR UNIT = U.S. SURVEY FEET
COORDINATE SYSTEM 1983 STATE PLANE
TRANSVERSE MERCATOR PROJECTION
ALL DISTANCES ARE GROUND
SCALE FACTOR = 1.000077
S 02°12'00" W (PLAT BEARING)
S 02°12'02" W (GRID BEARING)
00°00'02" = COUNTERCLOCKWISE
BEARING ROTATION, PLAT TO GRID